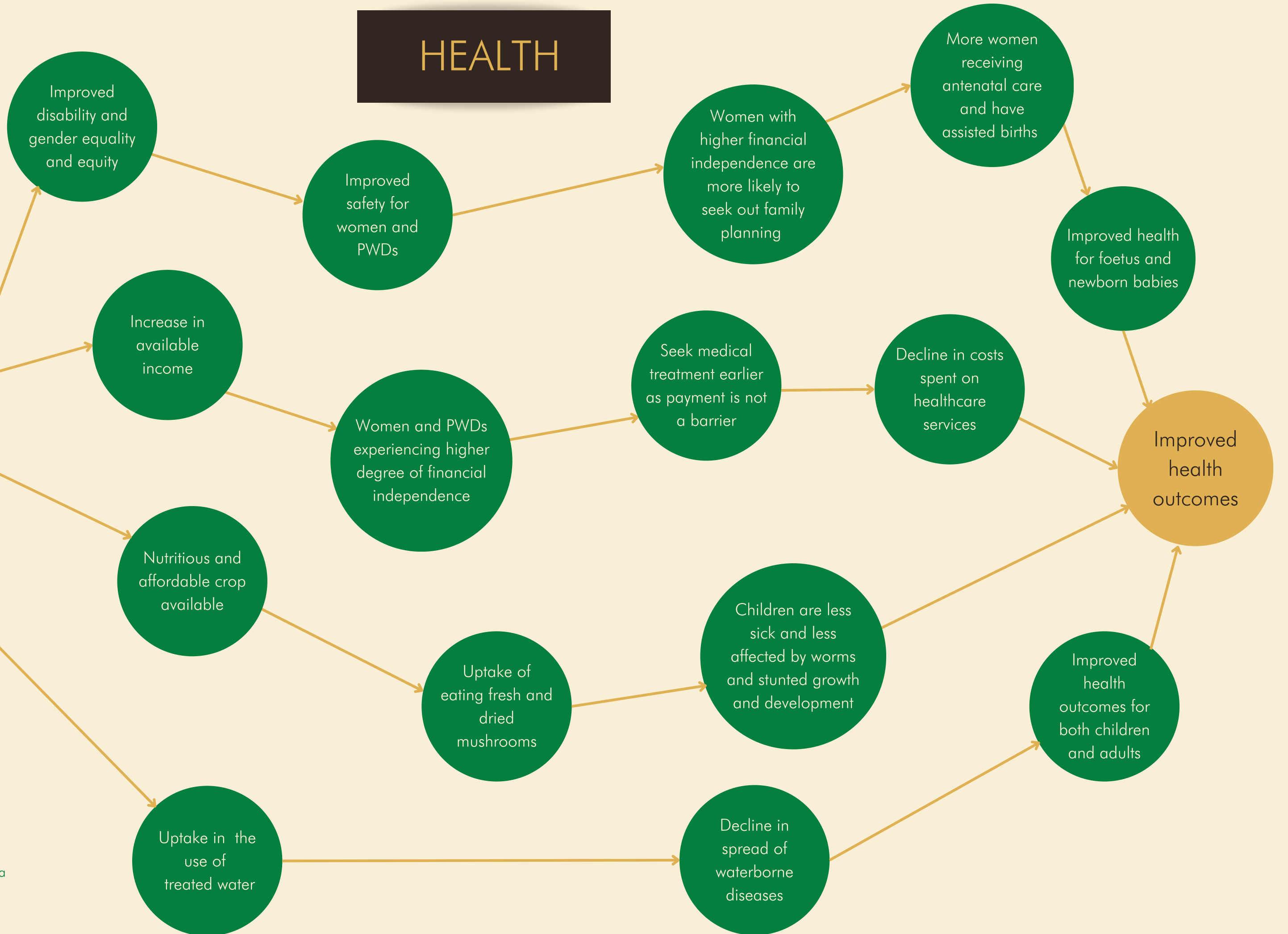


HEALTH

Establish mushroom farming teaching centre.
 Provide skill-based hands-on training to 200 beneficiaries every year.
 Deliver training in business principles and phone banking
 Encourage and support uptake of collaborative farms.
 Encourage usage of purified water for mushroom farming.
 Encourage consumption of fresh and dried mushrooms.

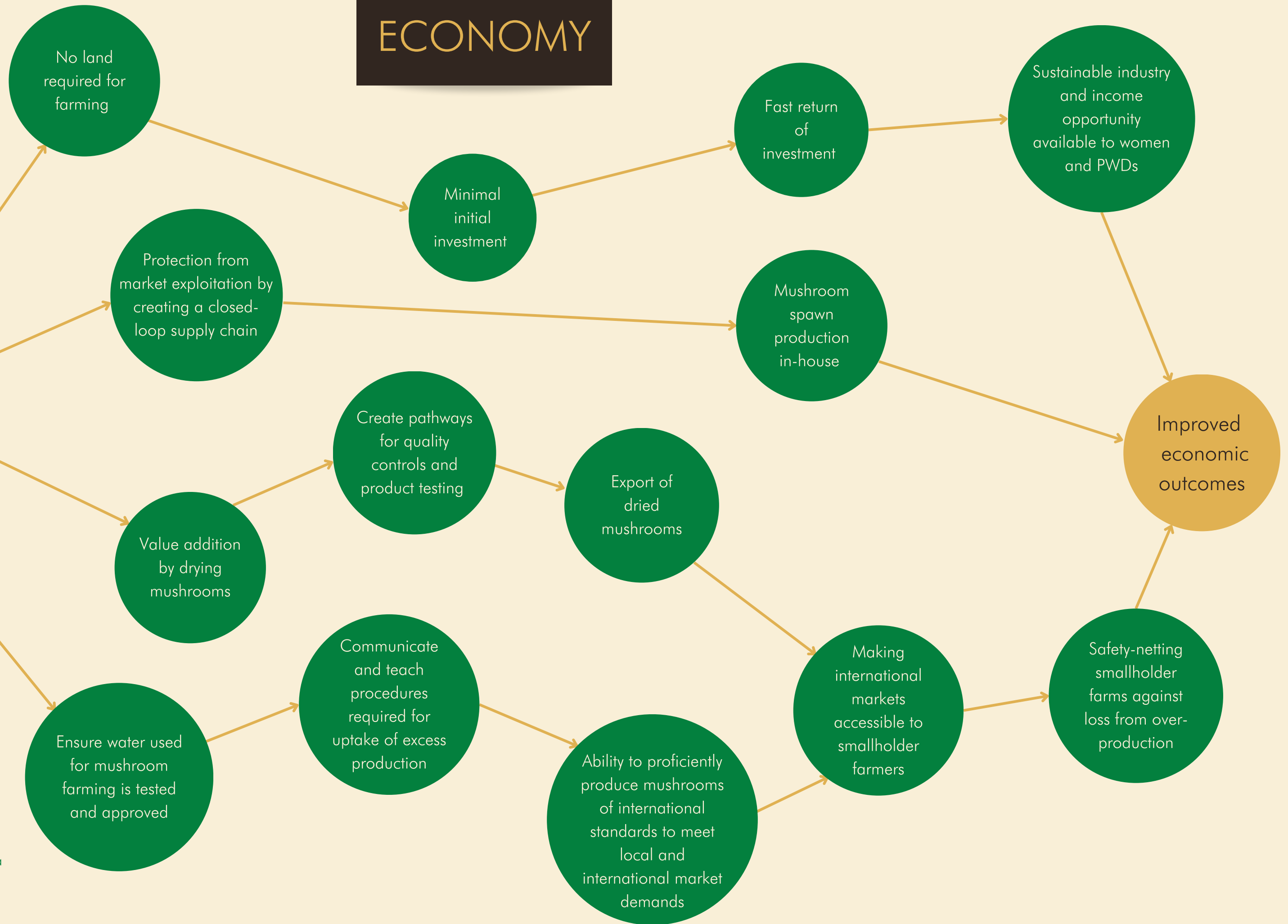


Assumptions:

- Priority given to women and PWDs
- 200 clients taught per year
- Production from teaching centre belongs to Cedar Tanzania
- Population of Nyamatongo Ward is 35,000
- 50% of yearly clients will set up collaborative farm
- Additional 25% will produce for own consumption.

ECONOMY

Establish mushroom farming teaching centre.
 Provide skill-based hands-on training to 200 beneficiaries every year.
 Deliver training in business principles and phone banking
 Encourage and support uptake of collaborative farms.
 Encourage usage of purified water for mushroom farming.
 Encourage consumption of fresh and dried mushrooms.



- Assumptions:
- Priority given to women and PWDs
 - 200 clients taught per year
 - Production from teaching centre belongs to Cedar Tanzania
 - Population of Nyamatongo Ward is 35,000
 - 50% of yearly clients will set up collaborative farm
 - Additional 25% will produce for own consumption.

CLIMATE

Establish mushroom farming teaching centre.

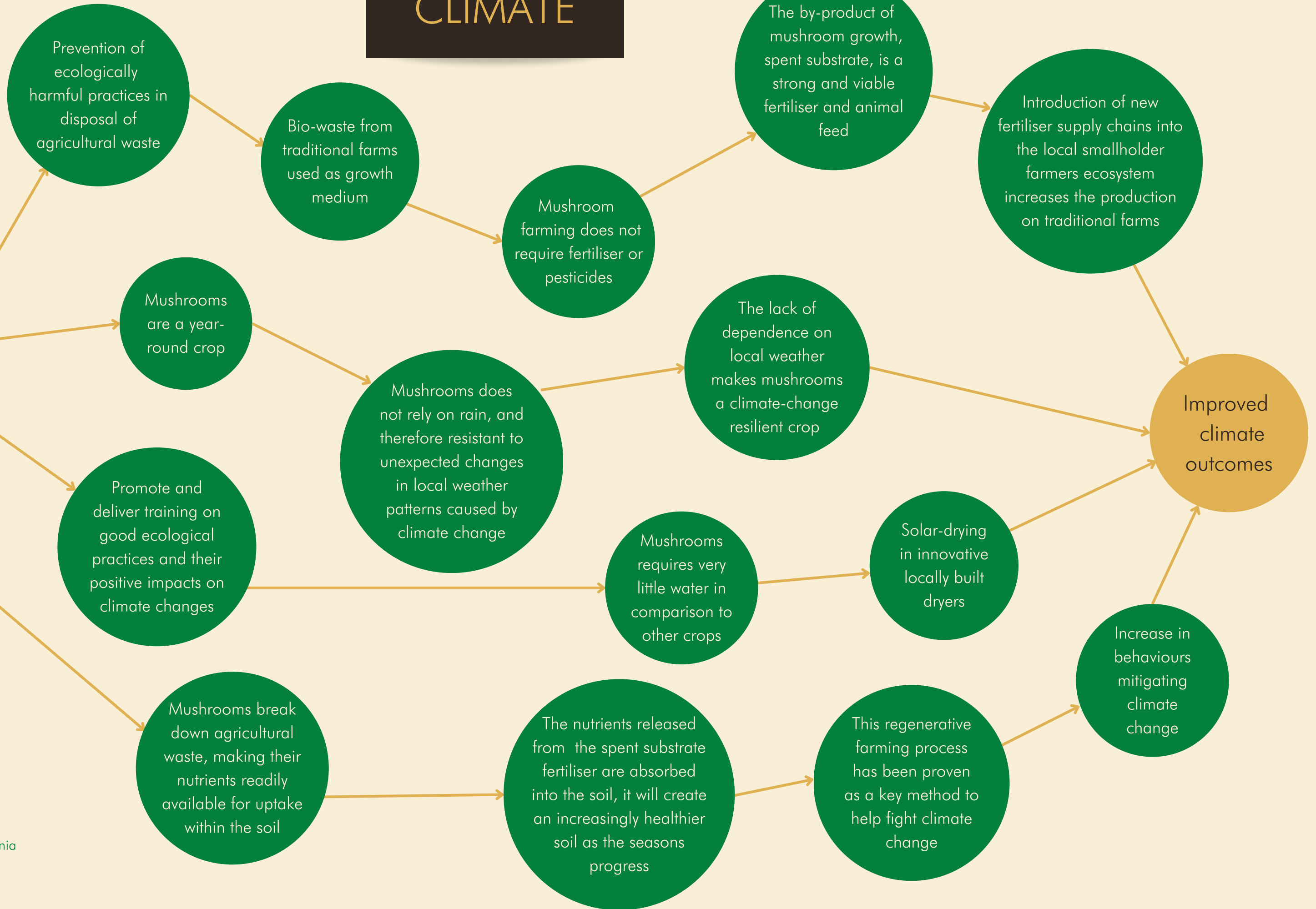
Provide skill-based hands-on training to 200 beneficiaries every year.

Deliver training in business principles and phone banking

Encourage and support uptake of collaborative farms.

Encourage usage of purified water for mushroom farming.

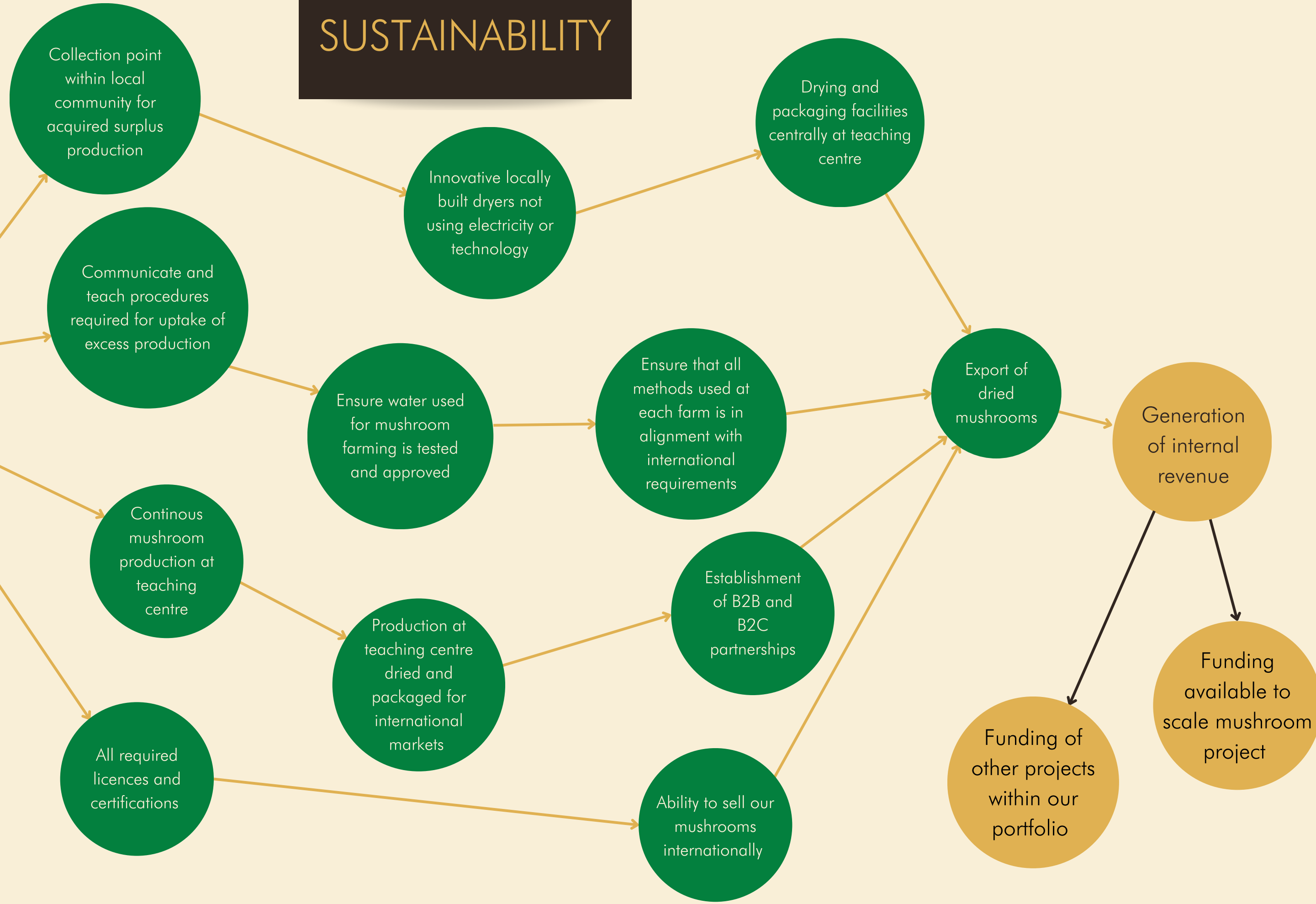
Encourage consumption of fresh and dried mushrooms.



- Assumptions:
- Priority given to women and PWDs
 - 200 clients taught per year
 - Production from teaching centre belongs to Cedar Tanzania
 - Population of Nyamatongo Ward is 35,000
 - 50% of yearly clients will set up collaborative farm
 - Additional 25% will produce for own consumption.

SUSTAINABILITY

Establish mushroom farming teaching centre.
 Provide skill-based hands-on training to 200 beneficiaries every year.
 Deliver training in business principles and phone banking
 Encourage and support uptake of collaborative farms.
 Encourage usage of purified water for mushroom farming.
 Encourage consumption of fresh and dried mushrooms.



- Assumptions:
- Priority given to women and PWDs
 - 200 clients taught per year
 - Production from teaching centre belongs to Cedar Tanzania
 - Population of Nyamatongo Ward is 35,000
 - 50% of yearly clients will set up collaborative farm
 - Additional 25% will produce for own consumption.